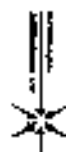
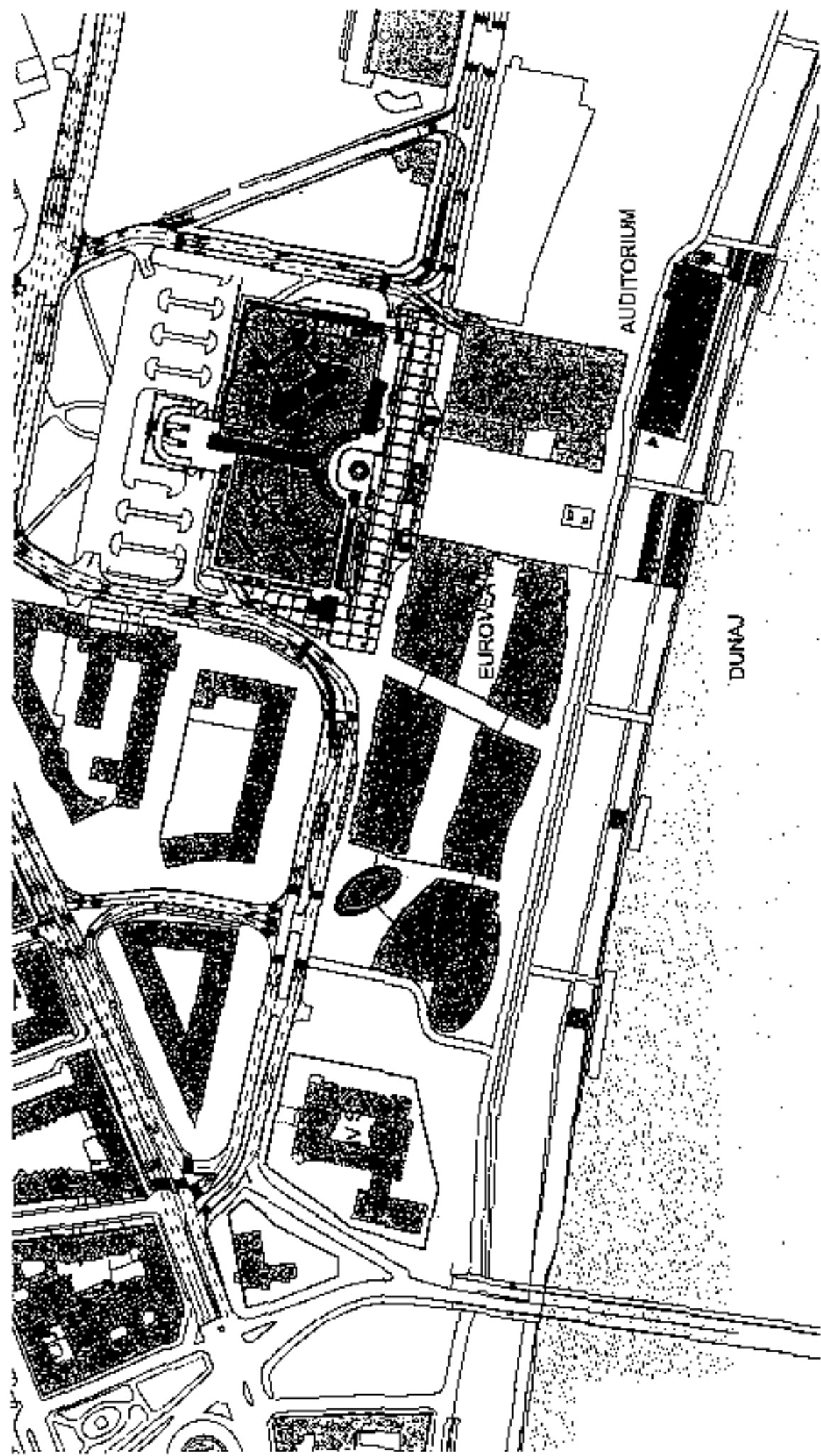


City Auditorium Bratislava

Sklad 7





sitračia

AUDITORIUM

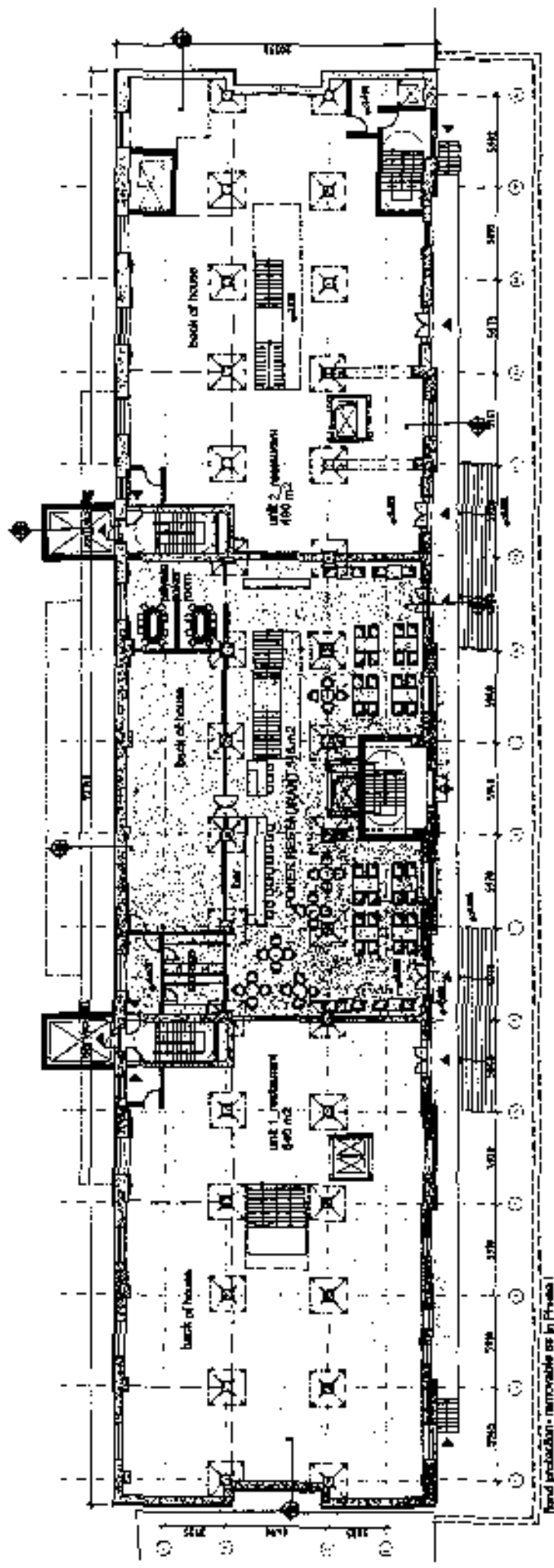
EUROVEK

DUNAJ

City Auditorium Bratislava Sklad 7



1:2000



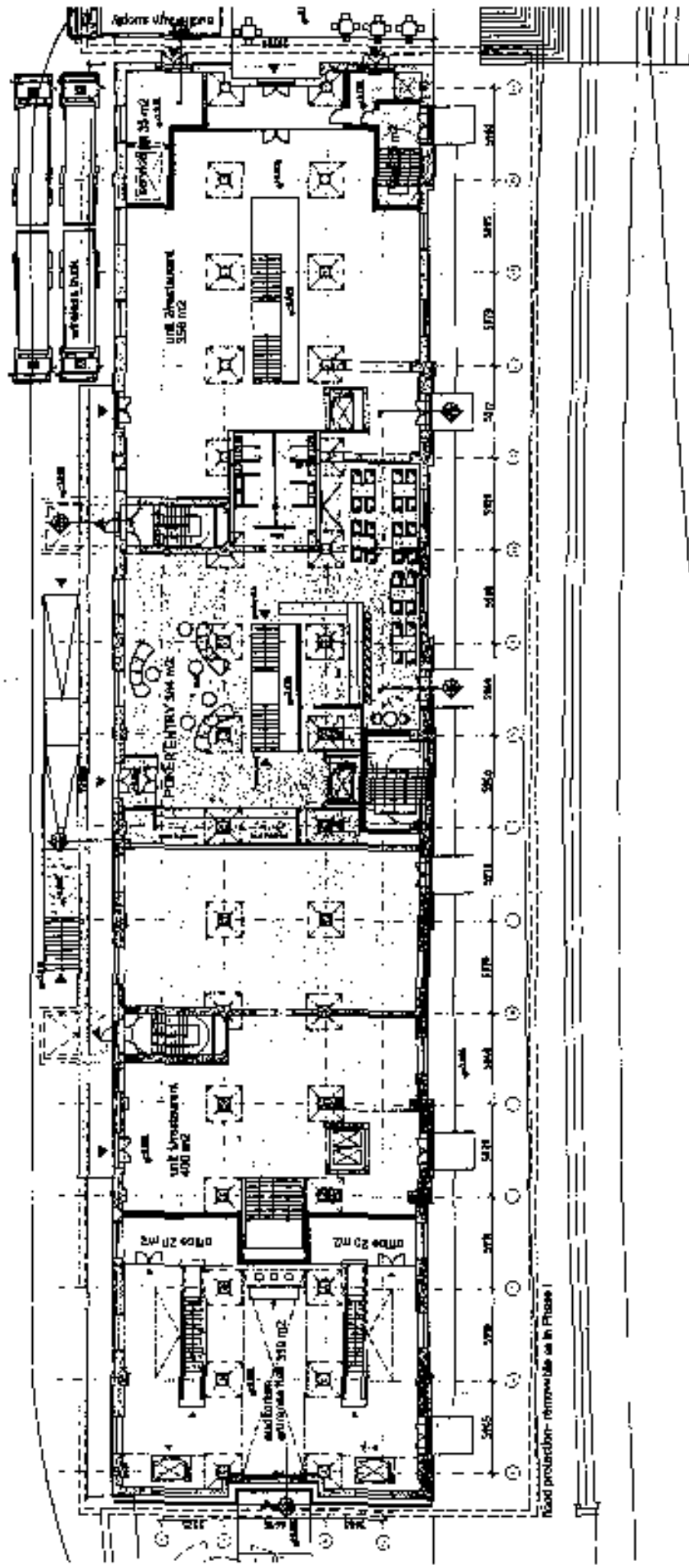
fixed production - removable as in Phase 1

floorplan -01

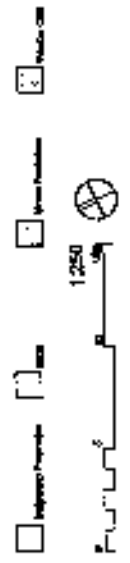
- Production equipment
- Stage
- Back of house
- Production office



City Auditorium Bratislava Sklad 7



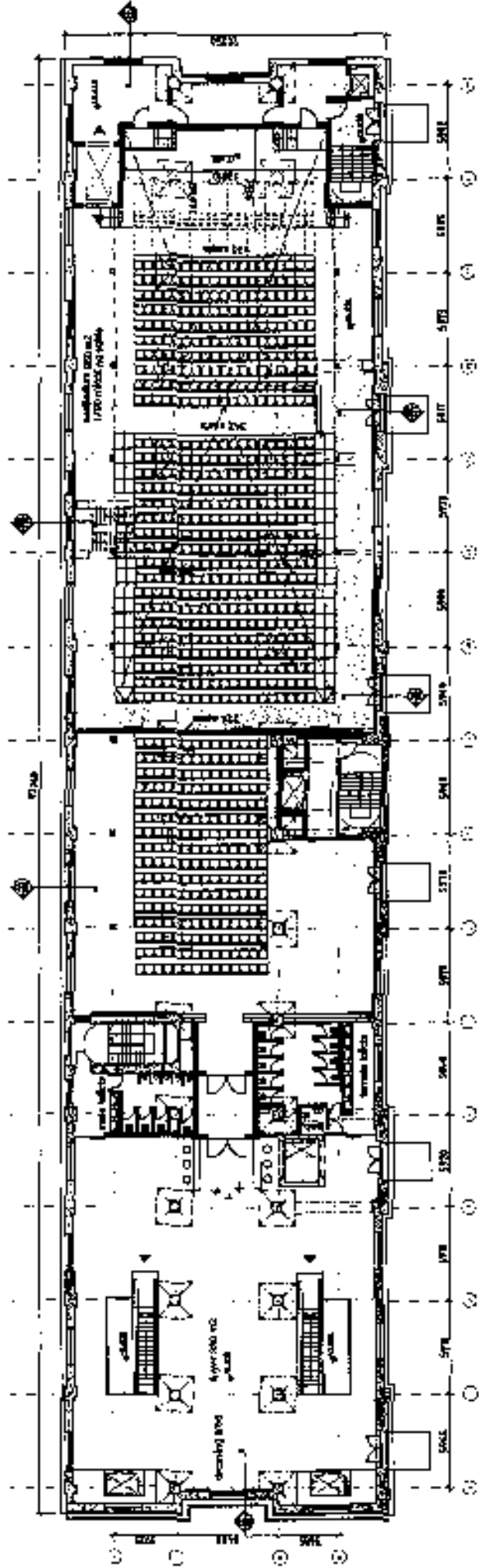
Road pavement - removable at 1st Phase



groundfloor

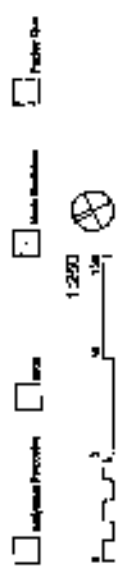
City Auditorium Bratislava Sklad 7

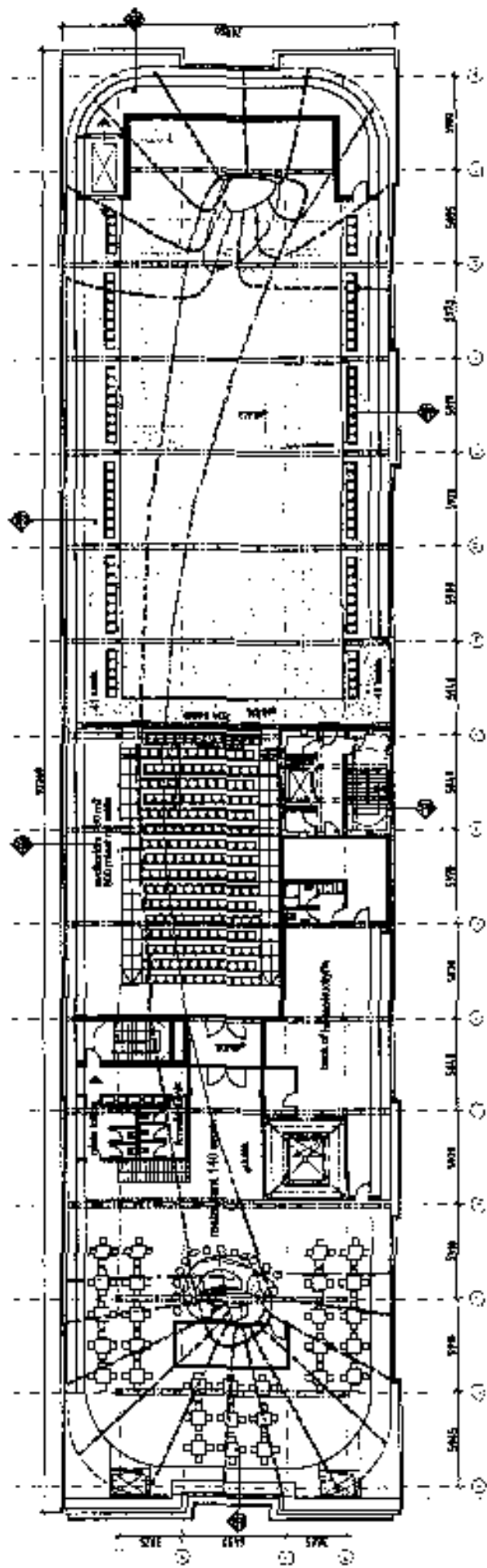




floorplan 02

City Auditorium Bratislava Sklad 7



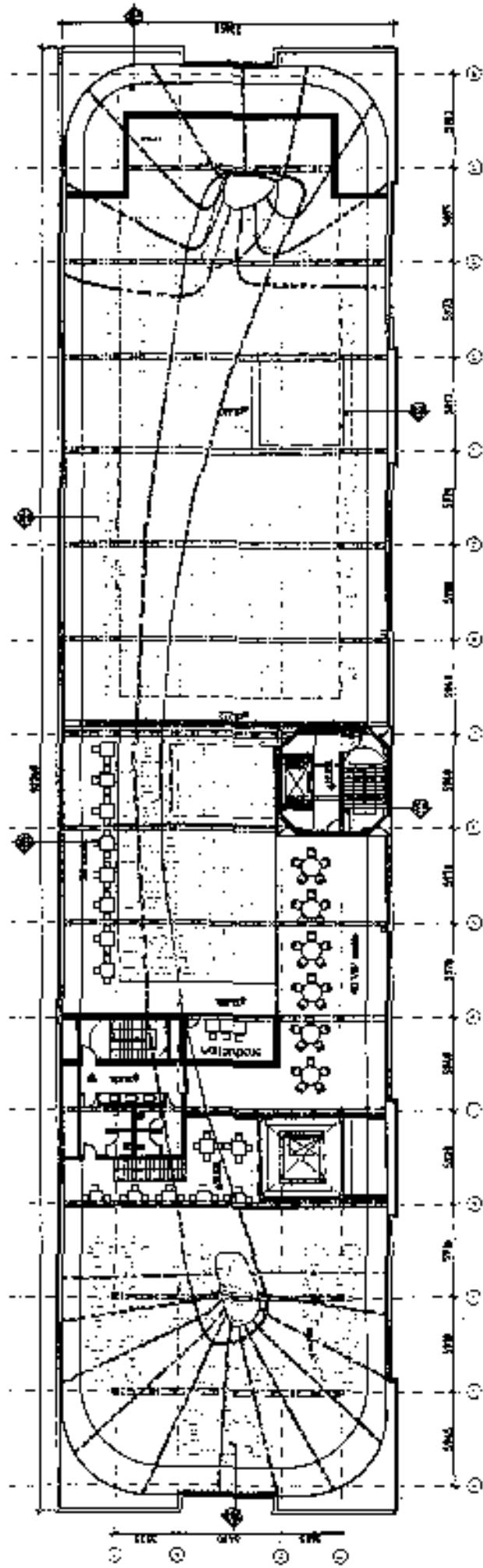


Floorplan 03

City Auditorium Bratislava Sklad 7

- Stage equipment
- Balcony
- Service area
- Entrance exit



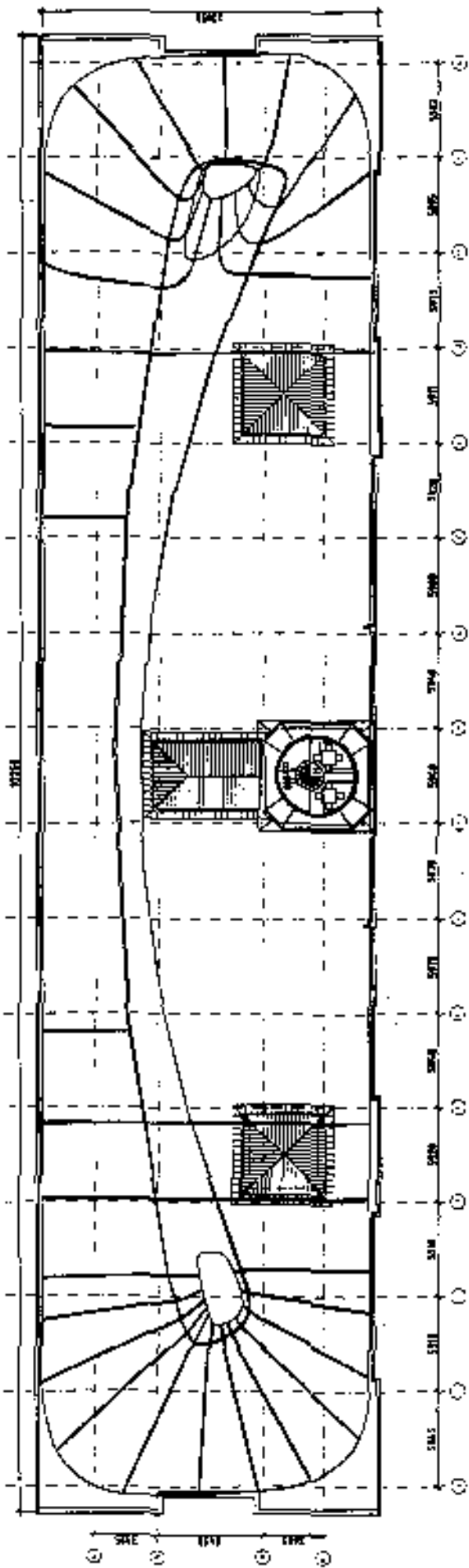


floorplan 04

- Exposed structure
- Stage
- Music quarters
- Public area



City Auditorium Bratislava Sklad 7

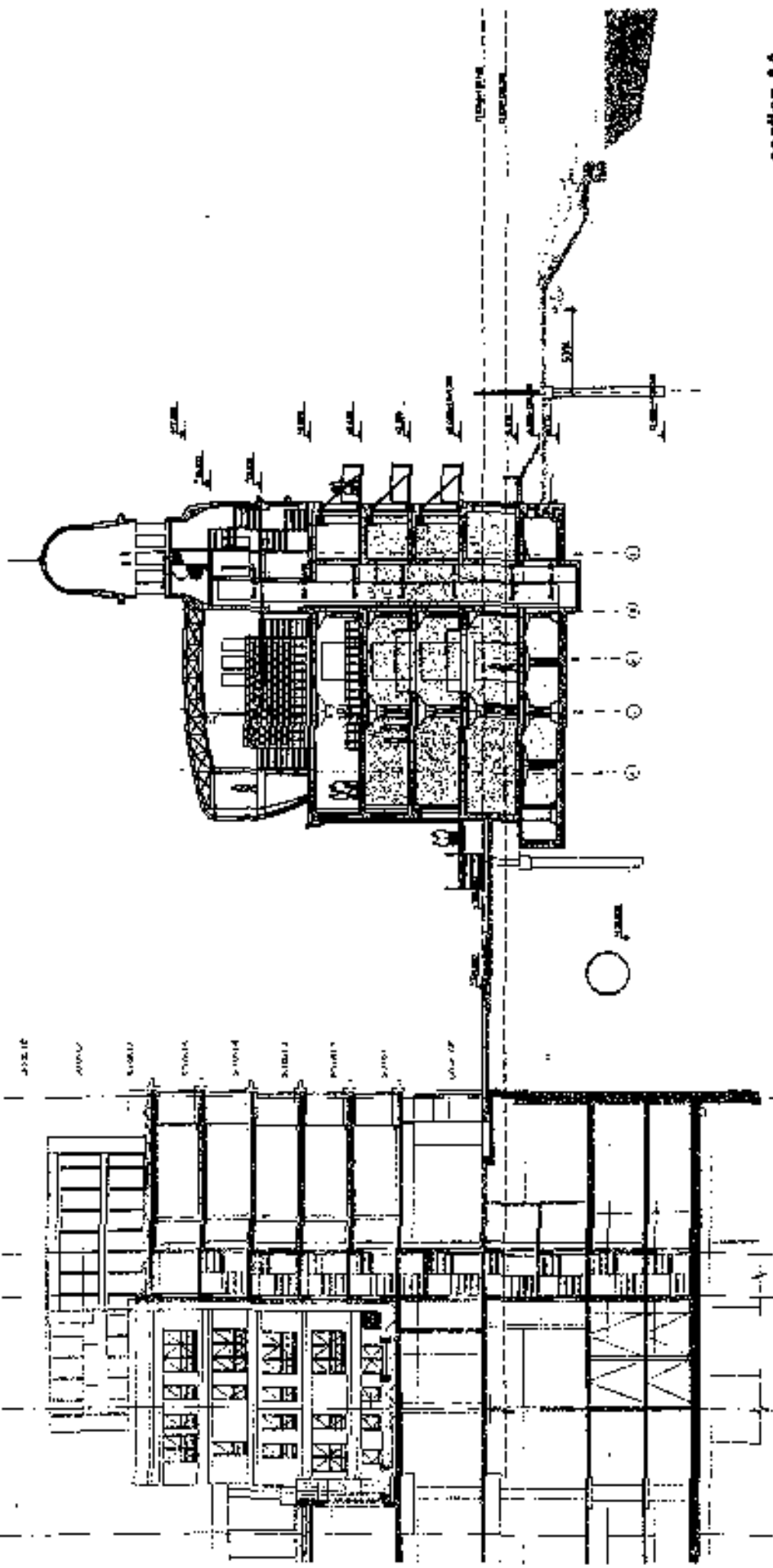


floorplan 05

City Auditorium Bratislava
Sklad 7



BRIS



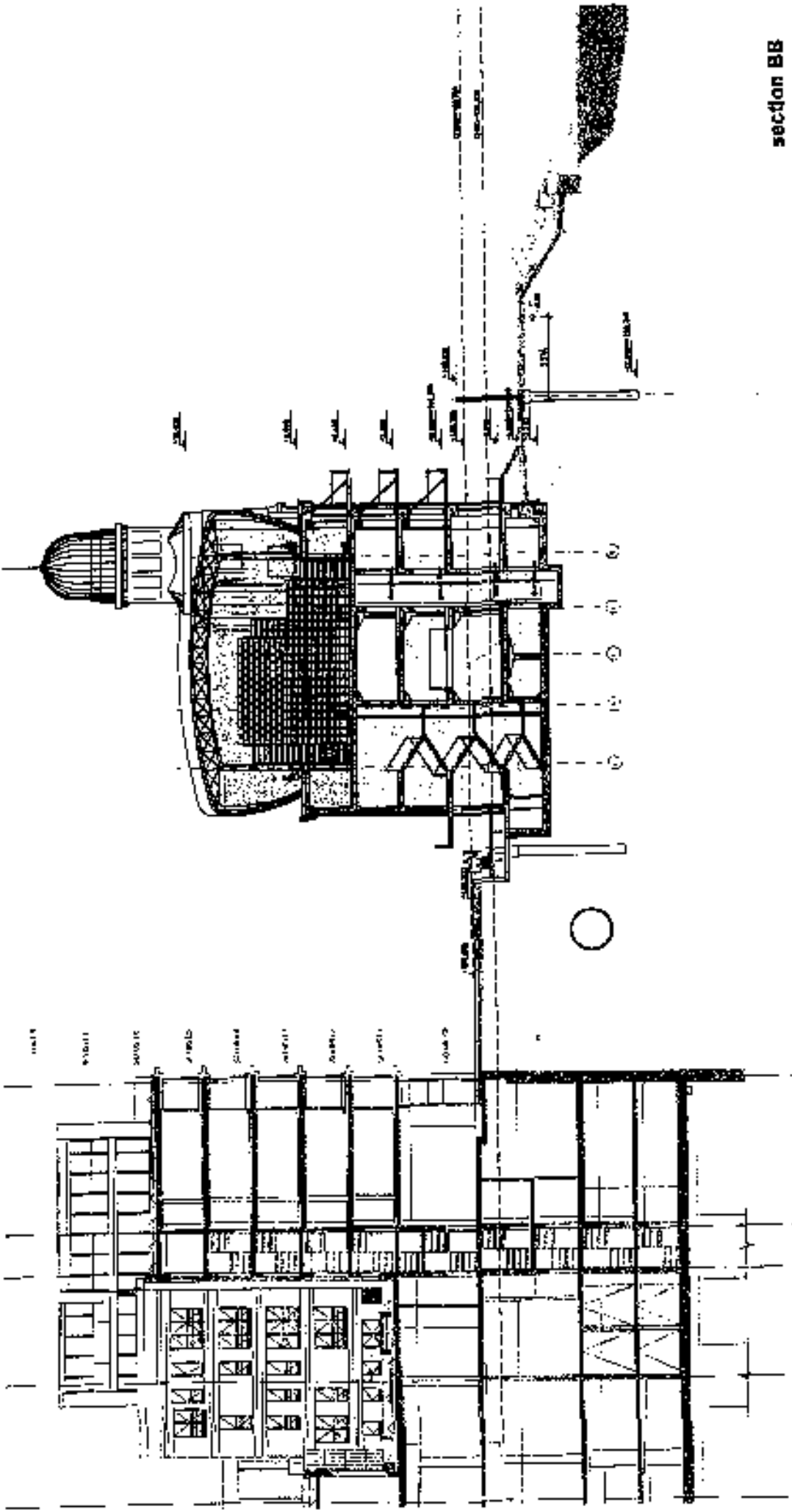
section AA

- reinforced concrete
- steel
- brick
- glass
- wood
- plaster
- floor
- roof

1:250

City Auditorium Bratislava Sklad 7

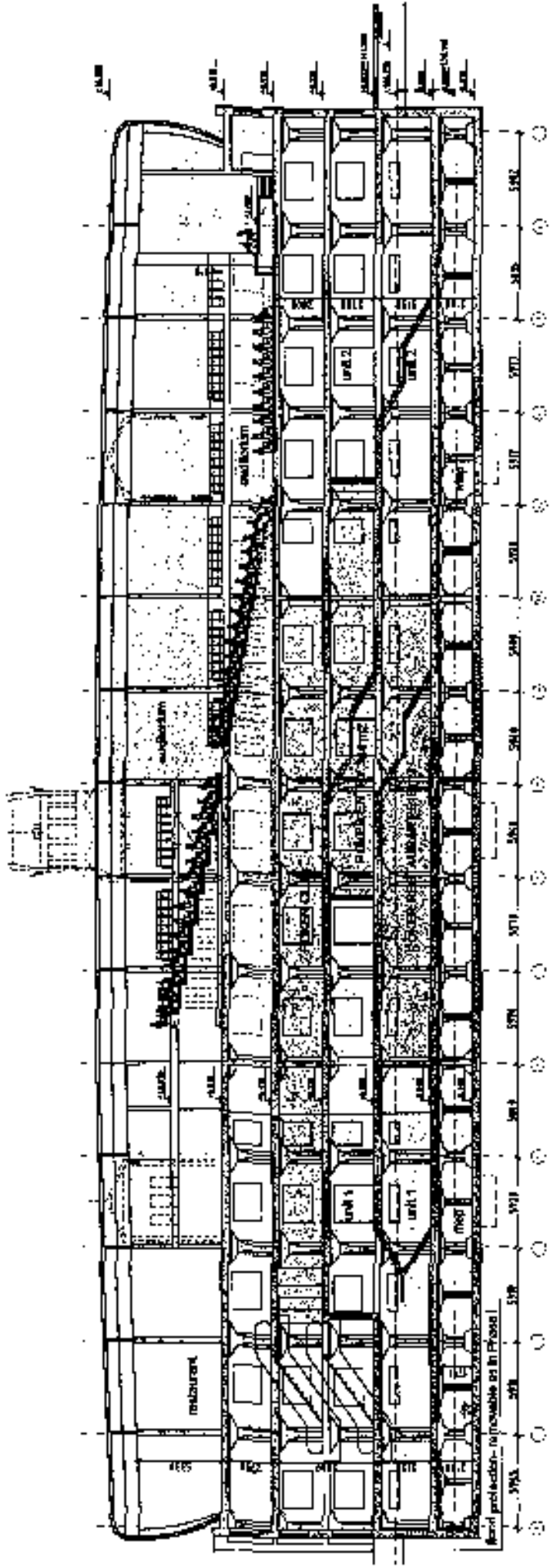




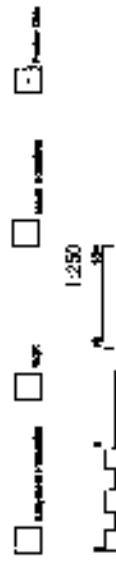
section BB



City Auditorium Bratislava
Sklad 7

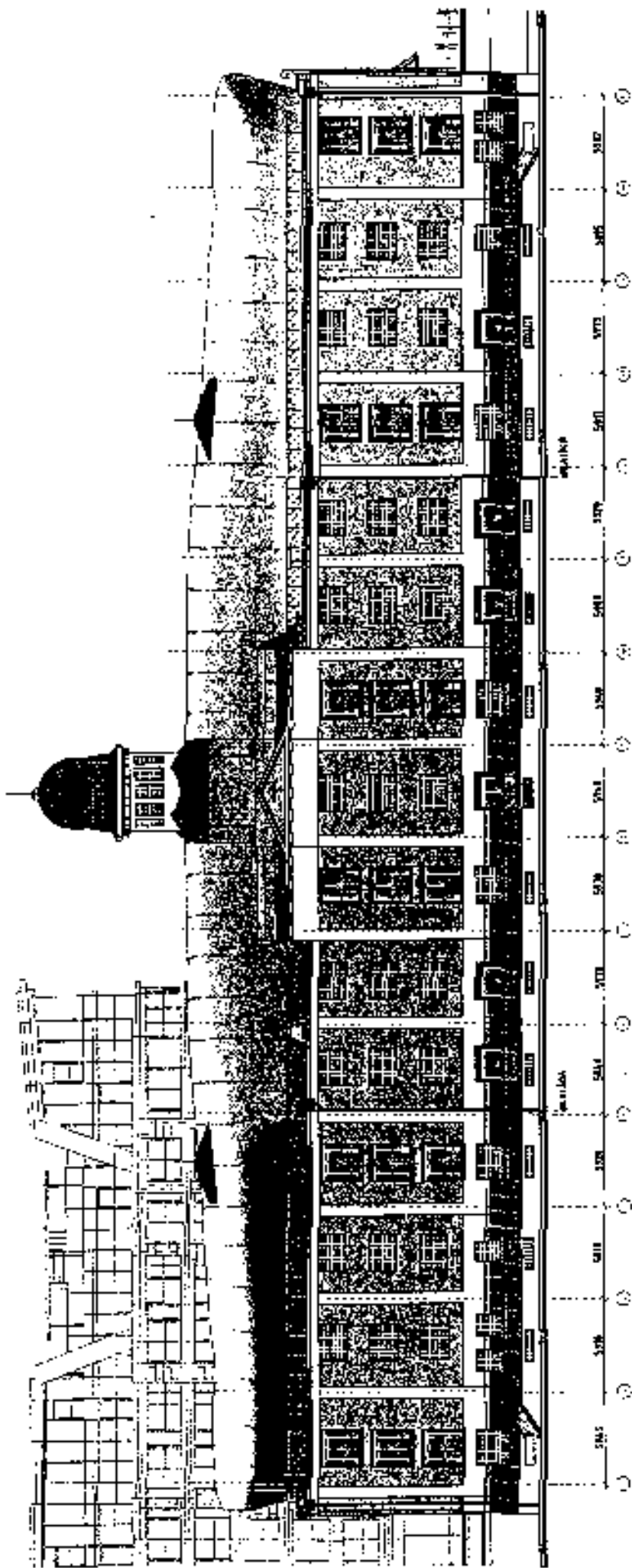


longitudinal section CC



City Auditorium Bratislava
Sklad 7





poľahľad južný

vstupná predajňa
 kasa
 výstupná predajňa
 výstupná predajňa

1:250



City Auditorium Bratislava
Sklad 7